



**CUNARD**



QUEEN MARY 2

QUEEN VICTORIA

QUEEN ELIZABETH

QUEEN ANNE



## Contents.



Welcome to Cunard	3-4
Sailing with confidence	5
What's included	6
Uncover a world of possibilities	7
Your guide to Cunard ships	8-9
Your guide to Cunard accommodation	10-11
2022/2023 Homeport season	12-13
Australia and New Zealand	14-15
Asia	16-17
Northern Europe and the British Isles	18-19
The Mediterranean, Atlantic Coast and Canary Islands	20-21
Americas	22-23
Alaska	24-25
Grand Voyages	26-27
Staterooms and deck plans	28-41



Join us on [facebook.com/cunard](https://facebook.com/cunard)



Follow us on [twitter.com/cunardline](https://twitter.com/cunardline)



Get inspired at [instagram.com/cunardline](https://instagram.com/cunardline)



## Welcome to The Fine Line.



Why is it that many of our discerning guests say that they would never sail with anyone else?  
 Is it our famous White Star Service? Our Gala Balls, our Afternoon Teas or our choice of restaurants and bars?  
 Or is it something less obvious? Something that goes almost unseen.  
 Every single personal touch. Every 'extra mile'. Every 'as it should be'. Every 'just what I needed'.  
 There's a fine line between cruising and Cunard.  
 Cross it with us.





# Welcome to the incomparable world of Cunard.



### The Suite Life.

Take everything you love about Cunard to the highest level and escape to your private address at sea. Step into an exclusive sanctuary of space and discover a world of effortless indulgence, from bespoke dining and personalised service to hosting your own parties.



### Showtime.

Our gala balls transform an evening on board into a glamorous event, where you can dance to a live orchestra in the elegant Queens Room. Use this opportunity to sparkle in your best evening gown and be your most glamorous self.



### Golden Age Glamour.

Frank Sinatra, Audrey Hepburn and Liz Taylor. We've hosted the famous and fabulous on the iconic Transatlantic Crossing for over 180 years, and now invite you to share in that timeless sense of glamour, and create your own history – in style.



### White Star Service.

From the very first greeting when you embark to the way your stateroom steward greets you by name, we believe great service is warm and sincere - it isn't stuffy or hurried. It's always friendly, but never over familiar.



### Afternoon Tea.

Classically British, Afternoon Tea is a tradition we observe at 3.30pm daily. Our white-gloved waiters serve the perfect tea in the Queens Room, with freshly-baked scones and cream and exquisitely-cut finger sandwiches.



### Uncrowded Spaces.

On board Cunard's ships, guests enjoy a harmonious sense of spaciousness. From broad open decks to airy atriums, you're as sure to discover a restful spot as lively activity - somewhere to suit your changing mood.



# Book and sail with confidence.

At Cunard we are doing everything we can to fulfil our guests' holiday dreams, with your well-being as our constant priority.

Whether you're looking for assurances, flexibility in booking or information about your experience on board and on shore, we have introduced a few simple protocols to ensure you can book and sail with confidence.



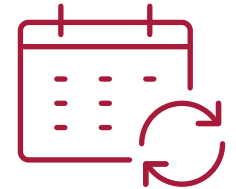
### We'll look after you

We regularly update our health and well-being measures as we work with experts and government bodies to respond to the latest advice to keep everyone protected.



### All guests and crew vaccinated

All guests and crew are vaccinated and a negative test result is required upon embarkation.



### Fee-free booking changes

Transfer your booking as many times as you'd like, free of charge, up to the date the balance for your holiday is due.



### Covid-19 fare protection

If you contract Covid-19 before you sail, you'll have to rebook your voyage. Cunard have made that easy to do by giving you a Future Cruise Credit (FCC) so you can book and sail later. If Cunard needs to cancel your voyage for any reason, you'll be given the choice of a FCC or a full refund. Full terms and conditions are available on our website.



### Working with Bureau Veritas

In line with Chamber of Shipping guidance, the health and well-being protocols onboard our ships have achieved external validation from Bureau Veritas a world leader in testing, inspection and certification.

For more information visit [cunard.com/sailing-with-confidence](https://cunard.com/sailing-with-confidence)





## What's included.

Wherever you choose to discover, you'll find lots included in your fare. Well appointed accommodation, fine dining, fabulous entertainment and outstanding service, it's all included.



### Accommodation.

With en-suite bathrooms, tea and coffee making facilities, in-stateroom entertainment and twice daily Steward service.



### Dining.

Breakfast, lunch, and dinner in the main restaurants, and daily Afternoon Tea in the Queens Room and Kings Court/ Lido restaurants. 24 hour room service and buffet options are available.



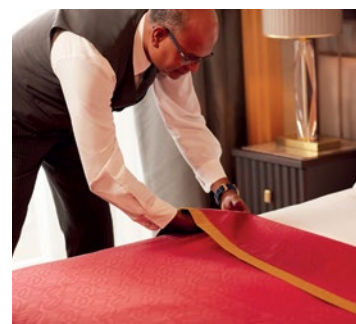
### Entertainment.

Cunard Insights, spectacular musical, comedy, dance, and drama productions, as well as daily film screenings. Live music around the ship includes jazz ensembles, classical recitals and singers.



### Activities.

Competitions, quizzes, dance and craft classes. Use of the swimming pools, whirlpools, gym, and sports deck/courts. As well as use of the on board library, puzzles and card room.



## Uncover a world of possibilities.

From the sophistication of a masquerade ball, to the simplicity of an al fresco breakfast on your balcony, the stage is set for you to create your own very special and memorable moments at sea. Whilst there are many ways you could spend your day on board, here are just a few activities to take you from morning to night.



9.00am.  
Room service

Start the morning with a leisurely breakfast, served to your stateroom.



10.15am.  
Rejuvenate

Take a slower pace to the day, with an uplifting treatment in the spa\*.



11.30am.  
Retail therapy

Indulge yourself with time for boutique shopping, from designer brands to fine art\*.



3.30pm.  
A Cunard tradition

At 3.30pm take Afternoon Tea in the Queens Room, served by white-gloved waiters.



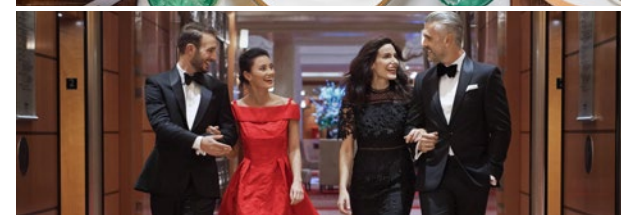
4.30pm.  
Deck games

Perhaps you'll fit in a little game of shuffle board on deck, before dinner.



7.30pm.  
Speciality dining

Why not make the evening extra special, by dining at Steakhouse at the Verandah?\*



10.00pm.  
A glamorous occasion

At our Gala Evenings an eight-piece orchestra sets the tempo to an unforgettable evening of dancing.

\*Costs apply.



# Your guide to Cunard ships

You can choose between three magnificent ships – Queen Elizabeth, Queen Victoria, and Queen Mary 2, with Queen Anne joining the fleet in 2024. Each is a place of discovery and relaxation, and the perfect setting from which to explore.

## Queen Mary 2.

Stronger, sleeker, smoother and swifter than a cruise ship. Queen Mary 2 offers the only regular Transatlantic service between Southampton and New York.

### Highlights:

- ◆ Illuminations – a full-scale planetarium (the only one at sea) which also becomes a 3D cinema
- ◆ Kennels – dogs and cats can travel in pampered comfort to and from New York
- ◆ Library – the largest library at sea with over 8,000 books
- ◆ Queens Room – home to our famous Afternoon Teas and Gala Balls, featuring the largest dance floor at sea.

### Facts.

Entered Service: 2004  
Country of Registry: Bermuda  
No. of Crew: 1,292  
Guest Capacity: 2,691  
Speed: 28 knots  
Length: 1,132 feet  
Width: 131 feet  
Draft: 34 feet



Coming in 2024

## Queen Anne.

Queen Anne is set to become the fourth member of the Cunard fleet, the first time since 1999 that we will have four ships in simultaneous service.

### Facts.

- ◆ The new 113,000 GRT (Gross Registered Tonnage) ship will carry 3,000 guests
- ◆ This will be the 249th ship to fly the Cunard flag
- ◆ Cunard's first new ship in 14 years, since the launch of Queen Elizabeth in 2010.



Royal Arcade shops

## Queen Elizabeth.

Queen Elizabeth was christened by her namesake Her Majesty the Queen and joined the fleet in 2010, the heyday of Hollywood glamour is evoked by her elegant wood panelling, gleaming chandeliers and marble flooring.

### Highlights:

- ◆ The Garden Lounge – a light and sociable room inspired by London's Kew Gardens
- ◆ Games Deck – a dedicated area to enjoy croquet, traditional bowls or paddle tennis
- ◆ Mareel Wellness & Beauty, the holistic spa experience, exclusive to Cunard.

### Facts.

Entered Service: 2010  
Country of Registry: Bermuda  
No. of Crew: 1,005  
Guest Capacity: 2,081  
Speed: 23.7 knots  
Length: 964.5 feet  
Width: 106 feet  
Draft: 25.9 feet

## Queen Victoria.

Queen Victoria is similar in size and layout to Queen Elizabeth, but with an Edwardian elegance. She's the first Cunard ship to have a female Captain – Inger Klein Thorhauge – and the first in the world to offer private theatre boxes at sea.

### Highlights:

- ◆ Winter Garden – a relaxed room with floor to ceiling windows and some of the best views out to sea
- ◆ Commodore Club – offering glorious panoramic views overlooking Queen Victoria's bow, plus a signature cocktail menu
- ◆ The gin and fizz themed menu in the Midships lounge – this brings to life wines, prosecco, cava and champagne alongside premium gin and spirits.



Royal Court

### Facts.

Entered Service: 2007  
Country of Registry: Bermuda  
No. of Crew: 981  
Guest Capacity: 2,061  
Speed: 23.7 knots  
Length: 964.5 feet  
Width: 106 feet  
Draft: 25.9 feet



# Your guide to Cunard accommodation



Our famous White Star service begins from the moment you step on board with your luggage delivered to your stateroom. Champagne or sparkling wine await as you board. 24-hour room service, including complimentary food come as standard along with Penhaligon's toiletries, fine Egyptian cotton linen and a pillow chocolate every evening.

Suites and staterooms vary by size and location on the ship. Your accommodation is matched to your restaurant:

## Did you know

The Grills concept originated on the ocean liner Aquitania in 1914, but came into its own on Queen Mary and Queen Elizabeth in the late Thirties. The Verandah Grill became the most sought after place to be for Hollywood stars, business tycoons and nobility.



## The Britannia experience.

When selecting a Britannia stateroom, you have the choice of king-sized or twin beds in Inside, Oceanview or staterooms with balconies. Single guests also have a choice of Inside or Oceanview staterooms.

Britannia restaurant

Britannia Club restaurant

### Stateroom categories

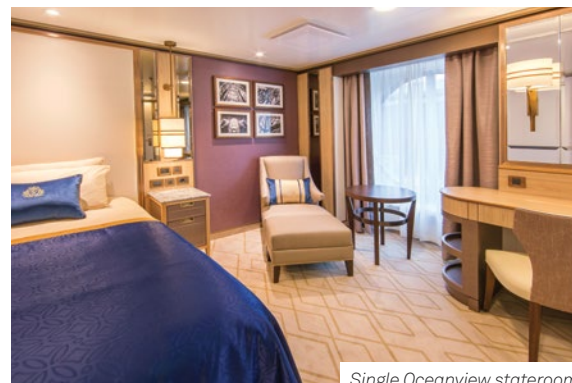
Inside

Oceanview

Balcony

Single

Club Balcony



Single Oceanview stateroom



Britannia Club stateroom

## The Grill Suites experience.

Cunard's Grill Suites are the epitome of the Cunard experience, where you can enjoy personal service and an abundance of space to relax in these exclusive suites with balconies\*, private lounge and beautiful terrace. In Queens Grill Suites, you can also enjoy the services of a butler. Here the finest food and wines make every meal in the Grill restaurants something extra special to savour.

Princess Grill restaurant

Queens Grill restaurant

### Stateroom categories

Suites

Grand Duplexes, Suites and Penthouses

\*Queen Anne Suite and Queen Victoria Suite on Queen Mary 2 do not have balconies.



Princess Grill Suite



Queens Grill Duplex





## Queen Elizabeth's Australia & New Zealand Season.



Queen Elizabeth's four-month Australia and New Zealand season will begin in November 2022 and will include more than 30 itinerary options as she sails from her homeports of Melbourne and Sydney.

Voyages will range from two-night sojourns between Sydney, Melbourne and Adelaide, longer journeys around Tasmania and New Zealand and a full Circumnavigation of Australia.



## Highlights of the 2022/2023 Homeport season.



Inaugural Australian Circumnavigation.

This voyage reveals a kaleidoscope of natural wonders. From the unblemished white sands of Airlie Beach, to the wild coast of Kangaroo Island, complemented by a day in Benoa, Bali.



Celebrate Christmas and NYE on board Cunard.

Cruise around New Zealand and make your next Christmas a magical and memorable experience. One filled with fine traditions, a beautiful Christmas tree, special menus and festive entertainment.



Christmas shopping in Melbourne or Hobart.

Join Queen Elizabeth in December for Christmas shopping in Melbourne or the famous Salamanca Market in Hobart.



Australia's Gardening Journey.

Australia's Gardening Journey offers a wonderful opportunity to indulge your love of horticulture. Guest speakers like Graham Ross and Jamie Durie will share their latest knowledge and garden trends during informative talks and exciting shore excursions.



Great Australian Culinary Voyage.

Cunard's first dedicated culinary cruise will highlight all aspects of Australia's unique produce, and will be joined by some of Australia's culinary royalty, who will make this voyage unforgettable with exclusive dishes for onboard diners and enriching talks and interviews.



Explore Tasmania's wilderness.

Discover spectacular landscapes, rugged highlands, quiet solitary beaches, rainforests and alpine wildflowers. Explore Mount Wellington from Hobart or Cradle Mountain from Burnie.





Auckland, New Zealand



## Australia and New Zealand, by Cunard.



Delve into these voyages of discovery throughout Australia and New Zealand and soak up awe-inspiring landscapes and enjoy a rich variety of cities and idyllic locations.

Fiordland National Park is renowned for the magnificent glacier-carved fiords of Doubtful and Milford Sounds. Port city Dunedin boasts a harmony of Scottish and Maori heritage, while 'long harbour' Akaroa offers access to Christchurch. North Island's highlights include the cultural epicentre Wellington, deco-inspired Napier and the enchanting Bay of Islands.

Explore Tasmania's natural beauty and renowned food and wine. In Tasmania's vibrant capital, Hobart, savour the art collections at Mona, stroll through Salamanca Place or enjoy thrilling views from the top of Mount Wellington. Discover Sydney, Melbourne and Adelaide on a selection of shorter voyages or experience the best of Australia with our inaugural Australian Circumnavigation voyage, worthy of everyone's bucket list.

Explore our selection of popular voyages. To find a full list of available cruises, please visit [cunard.com](http://cunard.com)

**QUEEN ELIZABETH**  
**Australian Circumnavigation**  
 28 nights - Sydney Roundtrip  
 15 Nov - 13 Dec 2022 ♦ Q232A

**QUEEN ELIZABETH**  
**Christmas & New Year Celebration**  
 14 nights  
 22 Dec 2022 - 5 Jan 2023 ♦ Q301

**QUEEN ELIZABETH**  
**Fremantle to Sydney**  
 11 nights  
 2 - 13 Dec 2022 ♦ Q233

**QUEEN ELIZABETH**  
**Tasmania**  
 7 nights  
 15 - 22 Dec 2022 ♦ Q235

**QUEEN ELIZABETH**  
**New Zealand**  
 13 nights  
 7 - 20 Jan 2023 ♦ Q303

**QUEEN ELIZABETH**  
**Australia's Gardening Journey**  
 7 nights  
 4 - 11 Feb 2023 ♦ Q307



Milford Sound, New Zealand





Mt Fuji, Japan



## Asia, by Cunard.



Stretching from the dynastic delights of Japan's outlying islands, to the iconic pristine beaches of Bali, journeys throughout Asia are explorations of stunning diversity.

Effervescent Yokohama is an epicentre of culinary diversity, and also your stepping stone to Tokyo. In Busan discover beautiful natural settings, while Manila boasts a charming blend of Spanish colonial architecture.

Discover the buzzing atmosphere of Singapore, the megacity of Jakarta and then capture the essence of Bali – The Island of the Gods.

Explore our selection of popular voyages. To find a full list of available cruises, please visit [cunard.com](http://cunard.com)

**QUEEN ELIZABETH**  
Melbourne to Singapore  
18 nights  
27 Feb - 17 Mar 2023 ♦ Q310B

**QUEEN ELIZABETH**  
Singapore to Tokyo  
16 nights  
3 - 19 Apr 2023 ♦ Q313C

**QUEEN ELIZABETH**  
Hong Kong to Tokyo  
10 nights  
9 - 19 Apr 2023 ♦ Q314

**QUEEN ELIZABETH**  
Japan Circumnavigation  
9 nights  
19 - 28 Apr 2023 ♦ Q315

**QUEEN ELIZABETH**  
Japan Grand Voyage  
18 nights  
6 - 24 May 2023 ♦ Q317A

**QUEEN ELIZABETH**  
Japan and Alaska  
25 nights  
15 May - 8 Jun 2023 ♦ Q318A



Busan, South Korea





Northern Lights, Norway



## Northern Europe and the British Isles, by Cunard.



Explore the many wonders of the lands of the Tsars and Vikings. Discover the British Isles and Northern Europe and witness the pristine scenery and striking beautiful cities.

See the wonders of Norway's remarkable coastline and the majestic beauty of the fjords. Sweden beckons with beautiful Gothenburg and Denmark tempts with dynamic Copenhagen and the magical Tivoli Gardens. Experience the raw drama of Iceland's striking landscape and uncover the fascinating history of Reykjavik on an overnight stay.

Explore our selection of popular voyages. To find a full list of available cruises, please visit [cunard.com](http://cunard.com)

**QUEEN MARY 2**  
The Fjords  
11 nights  
7 - 18 May 2023 ♦ M311D

**QUEEN VICTORIA**  
North Cape Discovery  
12 nights  
6 - 18 Jun 2023 ♦ V315

**QUEEN VICTORIA**  
Norway and Northern Lights  
12 nights  
11 - 23 Oct 2022 ♦ V227

**QUEEN VICTORIA**  
Norway and Northern Lights  
12 nights  
27 Oct - 8 Nov 2023 ♦ V329

**QUEEN VICTORIA**  
Iceland and British Isles  
14 nights  
2 - 16 Jul 2023 ♦ V318

**QUEEN VICTORIA**  
British Isles  
12 nights  
20 Aug - 1 Sep 2023 ♦ V323



Copenhagen, Denmark





Venice, Italy



## The Mediterranean, Atlantic Coast and Canary Islands, by Cunard.

The rich history and variety of cultures lining the shores of the Mediterranean are truly unique whilst the sub-tropical Canary Islands with their stunning scenery are just some of the attractions that will tempt you on these voyages. If you're yet to visit Croatia then you're in for a treat with the medieval walled city of Dubrovnik. Italy is always a joy and you'll find Venice a magical place to explore whilst absorbing the uniquely romantic atmosphere.

The sheer number of iconic sights in Rome is extraordinary whilst beguiling Barcelona boasts the atmospheric Ramblas and Gaudi's beautiful creations. Cadiz is your gateway to Seville's equestrian displays and vast cathedral. The 'Garden Isle' of Madeira is always a delight with vibrant and exotic flora. On route to and from the remarkable Canary Islands, you'll visit fascinating destinations, such as Portugal's atmospheric capital Lisbon.

Explore our selection of popular voyages. To find a full list of available cruises, please visit [cunard.com](http://cunard.com)

**QUEEN ELIZABETH**  
Western Mediterranean  
14 nights  
12 - 26 Sep 2022 ♦ Q227C

**QUEEN ELIZABETH**  
Western Mediterranean  
14 nights  
16 - 30 Oct 2023 ♦ Q332

**QUEEN VICTORIA**  
Canary Islands Celebration  
15 nights  
23 Dec 2022 - 7 Jan 2023 ♦ V301

**QUEEN VICTORIA**  
Venice and The Adriatic  
19 nights  
4 - 23 Sep 2022 ♦ V224

**QUEEN VICTORIA**  
Western Mediterranean  
14 nights  
23 Sep - 7 Oct 2022 ♦ V225

**QUEEN VICTORIA**  
Central Mediterranean  
19 nights  
1 - 20 Oct 2023 ♦ V327



Barcelona, Spain





Queen Mary 2 in New York, USA



## Americas, by Cunard.



Cunard is most famous for our Transatlantic Crossings that have long linked Europe and North America. By sailing this route and exploring the East Coast of the United States and Canada, you will become part of our history and share the same thrill of anticipation as our guests have experienced for over 180 years.

Within its non-stop buzz, the Big Apple serves up a slice of almost everything you could wish for. It contrasts perfectly with the more relaxed atmosphere of New England's sweeping coastline, clapboard houses and European flavour. As you cross into Canada, the outdoor spirit grows, as the landscape becomes ever more rugged and ever more photogenic.

Explore our selection of popular voyages. To find a full list of available cruises, please visit [cunard.com](http://cunard.com)

**QUEEN MARY 2**  
Transatlantic Crossing  
7 nights  
7 - 14 Jul 2023 ♦ M319

**QUEEN MARY 2**  
Eastern Caribbean  
13 nights  
20 Nov - 3 Dec 2022 ♦ M237

**QUEEN MARY 2**  
New England and Canada  
14 nights  
23 Sep - 7 Oct 2022 ♦ M230A

**QUEEN MARY 2**  
New England and Canada  
7 nights  
29 Sep - 6 Oct 2023 ♦ M330

**QUEEN ELIZABETH**  
Panama Canal  
14 nights  
22 Aug - 5 Sep 2023 ♦ Q328D

**QUEEN ELIZABETH**  
Panama Canal  
19 nights  
17 Aug - 5 Sep 2023 ♦ Q327B



New England, USA





Queen Elizabeth, Juneau, Alaska



## Alaska, by Cunard.

Discover remarkable natural wonders, unparalleled wildlife, and the rich cultural legacy of 'The Great Land', as you explore this wild frontier with Queen Elizabeth.

Each new day in Alaska presents you with awe-inspiring natural splendours. Revel at the blue hues of the immense Hubbard Glacier and journey through the 800km-long Inside Passage, which culminates in Glacier Bay – where Park Rangers will join you for captivating talks on the open decks, as you experience some of the world's most spectacular tidewater glaciers. Visiting by ship is perfect for these icy northern reaches, as many destinations are not easily accessible by land. Stretching from the wooden boardwalks of tiny Skagway and the Russian charms of Sitka, to the enigmatic totem poles dotting quaint Ketchikan, and mesmerising whale watching in capital Juneau, there's much to explore.

On board, savour a warming mug of Alaskan chowder, as naturalist experts deliver in-depth presentations, with recent sightings and on-deck commentary during your scenic cruising. Cultured Heritage Guides will immerse you in the contemporary lifestyle of the Alaskan people, while embracing their rich culture and strong traditions. Native performers will provide authentic entertainment, and you'll find a real sense of occasion at the Ice White Ball in the Queens Room.

Explore our selection of popular voyages. To find a full list of available cruises, please visit [cunard.com](http://cunard.com)

QUEEN ELIZABETH  
Japan and Alaska  
28 nights  
24 May - 20 Jun 2023 ♦ Q319A

QUEEN ELIZABETH  
Alaska  
12 nights  
8 - 20 Jun 2023 ♦ Q320

QUEEN ELIZABETH  
Alaska  
10 nights  
7- 17 Jul 2023 ♦ Q323

QUEEN ELIZABETH  
Alaska  
11 nights  
27 Jul - 7 Aug 2023 ♦ Q325

QUEEN ELIZABETH  
Alaska  
13 nights  
7 - 20 Aug 2023 ♦ Q326B

**Port highlights.**

The tiny town of Skagway is your gateway to the goldfields of old. Wander the wooden boardwalks and see the beautifully restored buildings. The town looks like it did 100 years ago.

Juneau offers fantastic pursuits like whale watching and kayaking amidst the stunning glaciers.

Glacier Bay is the crowning jewel of Alaska's Inside Passage. Part of a World Heritage Site, it's home to an array of wildlife and some of the world's most amazing tidewater glaciers.

The world's oldest totem poles can be viewed at the Totem Heritage Center in Ketchikan. Sportfishing and outdoor adventures abound.



Ketchikan, Alaska





Cape Town, South Africa



## Grand Voyages, by Cunard.



For those longing to see the world's most exotic places and spend relaxing days at sea, we also offer our selection of Grand Voyages, which form part of our World Voyages or a repositioning voyage.

Our Grand Voyages offer you the opportunity to visit magnificent destinations and ticking off items from your travel bucket lists like a Transatlantic Crossing, a Panama Canal transit, sailing under the Golden Gate Bridge or a transit of the Suez Canal.

With more days at sea you have greater luxury to discover the oceans, the peace and perhaps yourself.

Explore our selection of popular voyages. To find a full list of available cruises, please visit [cunard.com](http://cunard.com)

**QUEEN ELIZABETH**  
 Western Mediterranean to Sydney  
 43 nights  
 3 Oct - 15 Nov 2022 ♦ Q229C

**QUEEN ELIZABETH**  
 Panama Canal and Transatlantic Crossing  
 32 nights  
 21 Jul - 22 Aug 2022 ♦ Q223C

**QUEEN MARY 2**  
 Sydney to Singapore  
 24 nights  
 16 Feb - 12 Mar 2023 ♦ M305A

**QUEEN MARY 2**  
 Southampton to Sydney  
 60 nights  
 11 Jan - 12 Mar 2023 ♦ M303C

**QUEEN MARY 2**  
 Dubai to Sydney  
 38 nights  
 2 Feb - 12 Mar 2023 ♦ M304B



San Francisco, USA



Hong Kong





## Stateroom amenities.



	Queens Grill Suites	Princess Grill Suites	Britannia Club Staterooms	Britannia Staterooms
<b>Amenities</b>				
Butler service	◆			
Concierge service	◆	◆		
Embarkation welcome	Champagne and chocolates	Sparkling wine and chocolates	Sparkling wine	Half bottle of sparkling wine
Complimentary bar (stocked with two bottles of wine* or spirits* of your choice and soft drinks)	◆			
Pre-dinner canapés	◆			
Daily fresh fruit	◆	◆	On request	On request
Nightly turndown service with chocolate	◆	◆	◆	◆
<b>Features</b>				
Satellite TV (with multi-language film and music channels)	◆	◆	◆	◆
Direct-dial telephone	◆	◆	◆	◆
Refrigerator	◆	◆	◆	◆
Tea and coffee making facilities	◆	◆	◆	◆
illy coffee machine	◆	◆		
Hairdryer	◆	◆	◆	◆
Safe	◆	◆	◆	◆
iPad	◆			
<small>Queen Mary 2 - Q1 - Q4 suites, Queen Victoria and Queen Elizabeth Q1 - Q2 suites</small>				
Personalised stationery	◆	◆		
Books /atlas	Books and Atlas	Atlas		
Daily programme	◆	◆	◆	◆
Pillow concierge menu	◆	◆	◆	
Bathroom	Bath and shower	Bath and shower	Shower	Shower
Soft velour robes and slippers	◆	◆		
Bathrobe and slippers			◆	◆
Penhaligon's toiletries	Enhanced	Enhanced	◆	◆
220V British 3-pin and 110V 2-pin sockets	◆	◆	◆	◆
<b>Dining</b>				
24 hour room service	◆	◆	◆	◆
In-suite dining	Queens Grill Menu	Princess Grill Menu		
<b>Restaurant†</b>	Queens Grill restaurant	Princess Grill restaurant	Britannia Club	Britannia Restaurant
Queen Victoria and Queen Elizabeth: exclusive access to the Courtyard, Grills Lounge, and Grills Terrace	◆	◆		
Queen Mary 2: exclusive access to the Grills Lounge and Terrace	◆	◆		
<b>Services</b>				
Priority embarkation	◆	◆		
Priority disembarkation	◆			
Priority tender services	◆			
<small>All ships Q1-Q4 Suites</small>				

\* For suite consumption only. † These times may vary depending on the region of the ships' visit.



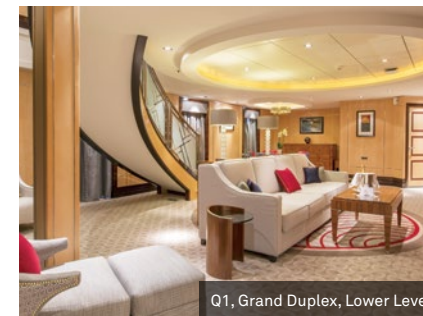
## Queen Mary 2 stateroom layouts and categories.



### Queens Grill Duplexes.



Q1, Grand Duplex, Upper Level



Q1, Grand Duplex, Lower Level

**Grand Duplex Q1**  
Upper Level – bedroom, 2 master bathrooms



Upper Level

Lower Level – guest bathroom, living/dining areas, balcony (approx 2,249 sq.ft. or 209 sq.m.)



Lower Level

### Queens Grill Penthouses.



Q4, Penthouse

**Penthouse Q4**  
2 beds, bath and shower, living area, balcony (approx 758 sq.ft. or 70 sq.m.)



Penthouse

### Queens Grill Suites.



Q5, Queens Suite

**Queens Suite Q5, Q6, Q7\***  
2 beds, bath with shower, living area, balcony (approx 506 sq.ft. or 47 sq.m.)

\*Wheelchair accessible Q7 suites have a roll-in shower instead of a combination bath/shower. Walk-in wardrobe is not available in wheelchair accessible suites.



Queens Suite

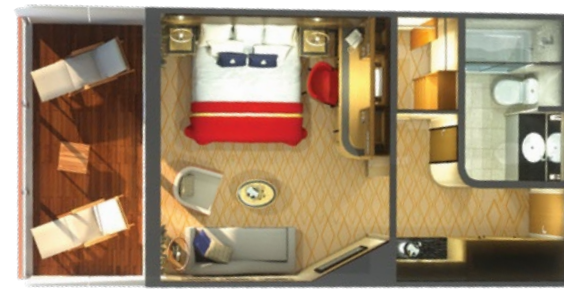
The diagrams and pictures of staterooms within this brochure are examples only, and individual staterooms may vary.



Princess Grill Suites.



**Princess Suite**  
P1, P2  
2 beds, bath with shower,  
living area, balcony  
(approx 381 sq.ft. or 35 sq.m.)



Princess Suite

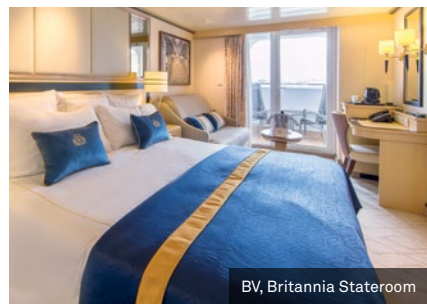
Britannia Staterooms.



**Club Balcony**  
A1, A2  
2 beds, shower,  
living area, balcony  
(approx 248 sq.ft. or 23 sq.m.)



Club Balcony



**Balcony**  
BB, BC, BF  
  
**Balcony (Sheltered)**  
BU, BV, BY, B2  
  
**Balcony (Obstructed View)**  
DB, BC, DF  
2 beds, shower, living area,  
balcony (from 248 sq.ft. or 23 sq.m.)



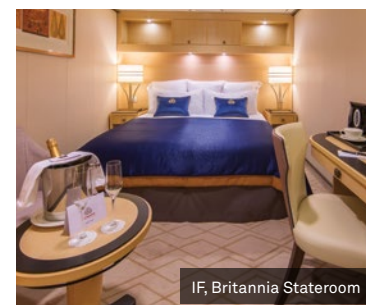
Balcony (sheltered)

Oceanview

EF  
2 beds and shower  
(from 159 sq.ft. or 14 sq.m.)



EF, Britannia Stateroom



IF, Britannia Stateroom

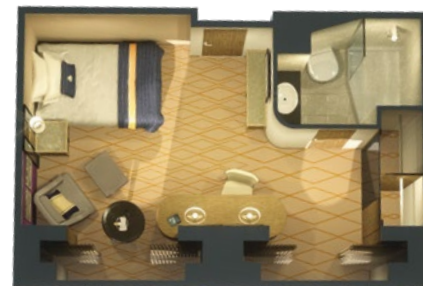


Inside Stateroom



**Single Oceanview**  
KC  
1 bed and shower  
(approx 185 sq.ft. or 17 sq.m.)

**Single Oceanview**  
KB  
1 bed and shower  
(approx 178 sq.ft. or 16 sq.m.)



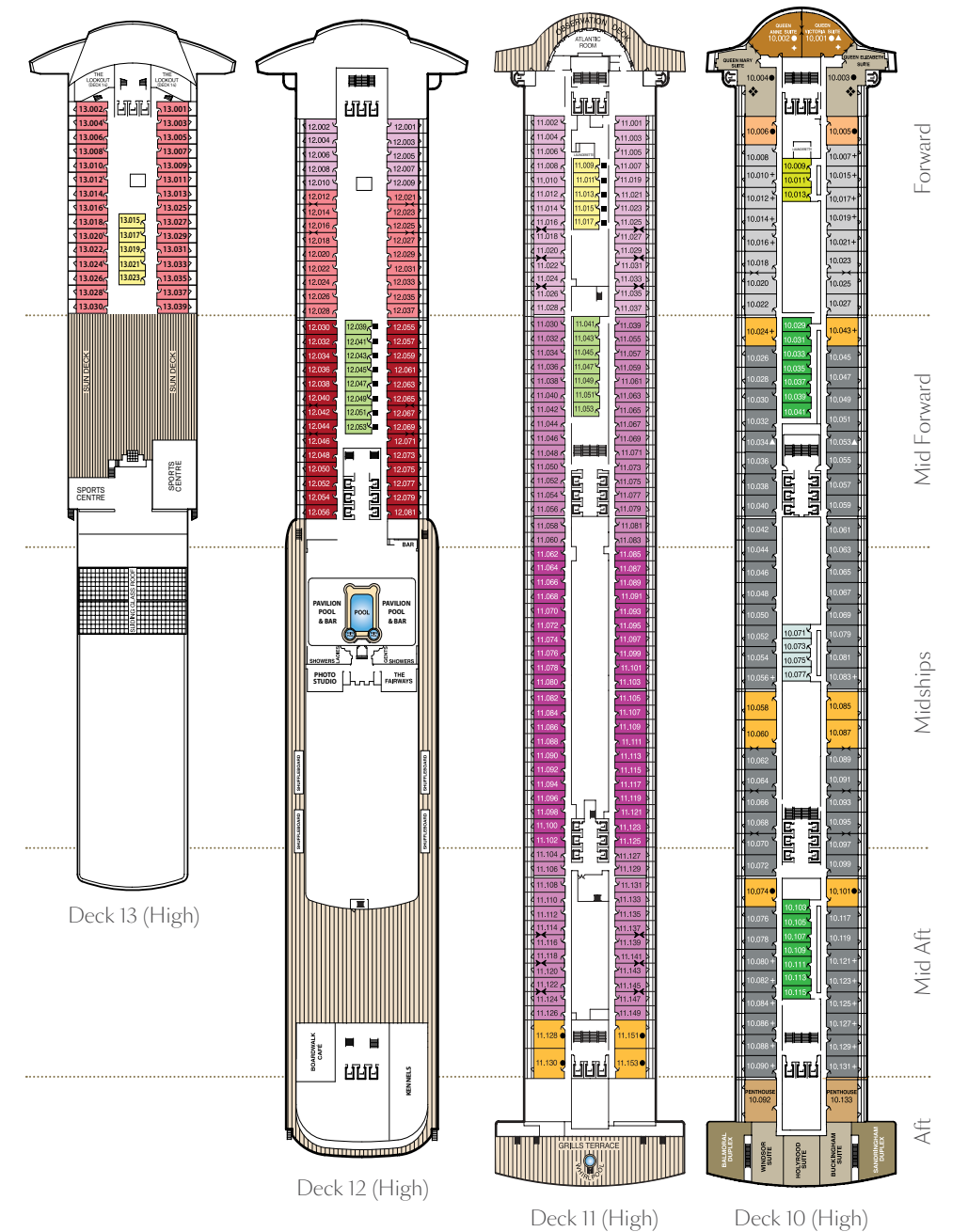
Single Oceanview (KC)

Queen Mary 2 deck plans.

Stateroom Category

- Grand Duplexes**
- Aft High Deck 10
- Duplexes & Suites**
- Forward/Aft High Deck 10
- Royal Suites +**
- Forward High Deck 10
- Penthouse**
- Midships/Aft High Deck 10
- Queens Suites**
- Midships/Aft High Decks 10,11
- Forward High Deck 10
- Princess Suites**
- Midships High Deck 10
- Forward High Deck 10
- Club Balcony**
- Midships High Deck 12
- Forward High Decks 12,13
- Balcony**
- Midships High Deck 11
- Midships High Deck 11
- Forward High Decks 11,12
- Standard Inside**
- Midships High Deck 10
- Midships High Deck 10
- Midships High Decks 11,12
- Forward High Deck 10
- Forward High Decks 11,13

- Q1
- Q2
- Q3
- Q4
- Q5
- Q6
- P1
- P2
- A1
- A2
- BB
- BC
- BF
- IA
- IB
- IC
- IE
- IF



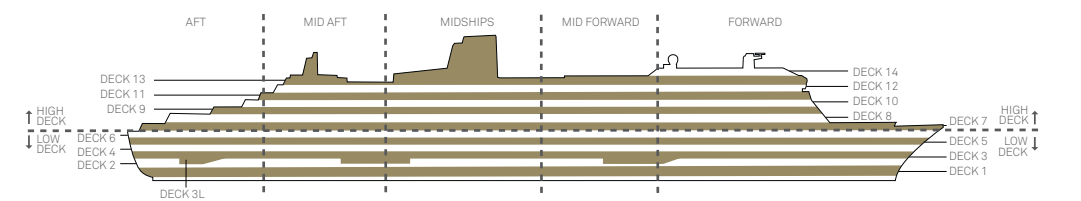
Ship facts

Entered Service: 2004  
Planned Refit: November 2020  
Country of Registry: Bermuda  
Speed: 28 knots  
Guest Capacity: 2,691  
No of Crew: 1,292  
Length: 1,132 feet (345 metres)  
Width: 131 feet (40 metres)  
Draft: 34 feet (9.75 metres)

View Queen Mary 2 stateroom accommodation and virtual tours online at [cunard.com/qm2](http://cunard.com/qm2)

Key to symbols

- L Lift
- Connecting staterooms
- + 3rd berth is a single sofa bed
- 3rd & 4th berth is a double sofa bed
- 3rd & 4th berths are two upper beds
- Staterooms have views obstructed by lifeboats
- ▲ Wheelchair accessible (stateroom sizes vary)
- ◆ Single level Q2 Suite
- ◆ Royal Suites do not have a balcony



The diagrams and pictures of staterooms within this brochure are examples only, and individual staterooms may vary.



Queen Mary 2 deck plans.

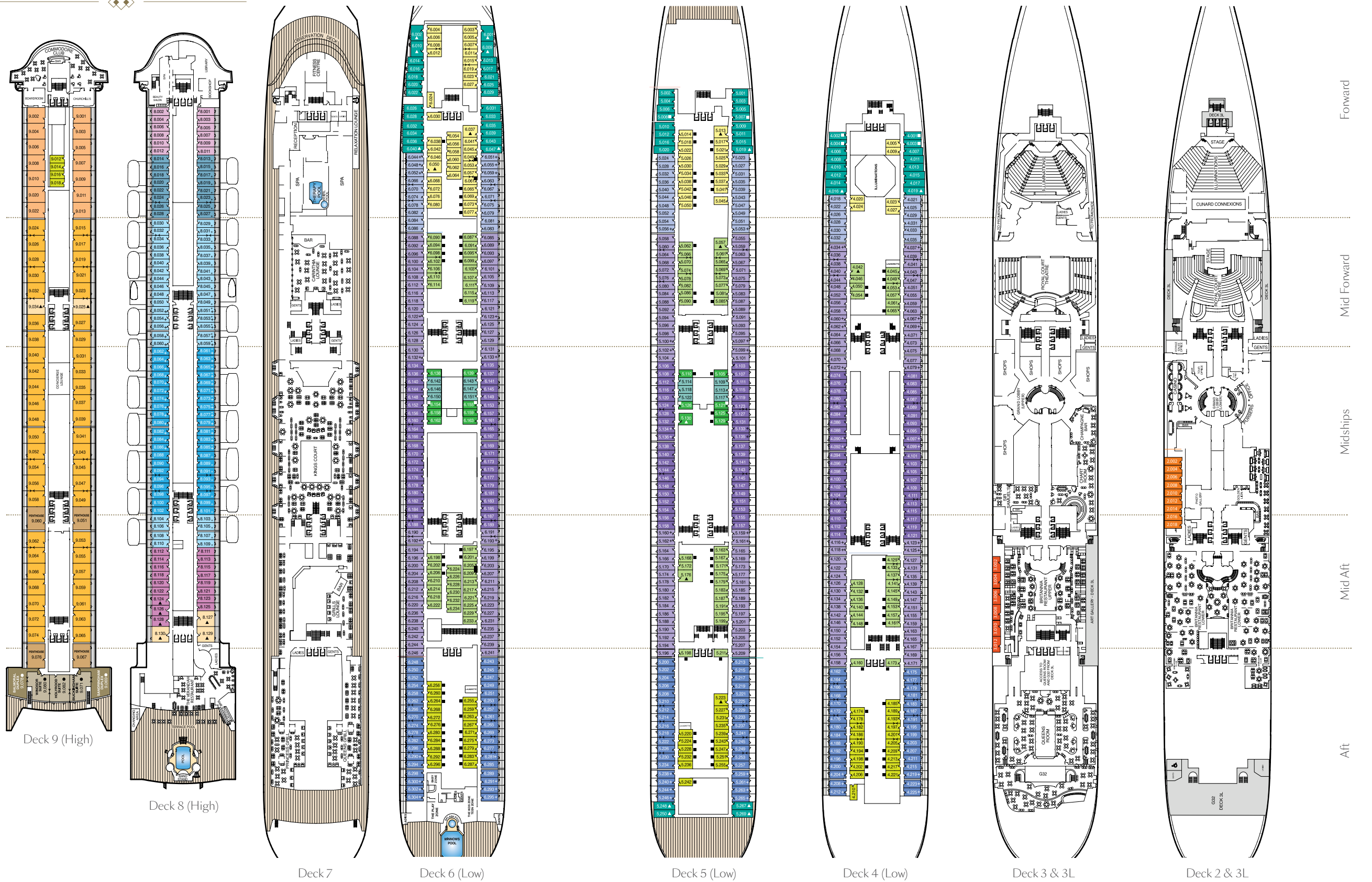
Stateroom Category

- Grand Duplexes**
- Aft High Deck 9
- Duplexes & Suites**
- Forward/Aft High Deck 9
- Penthouse**
- Midships/Aft High Deck 9
- Queens Suites**
- Midships/Aft High Deck 9
- Forward High Deck 9
- Midships High Deck 9
- Aft High Deck 8
- Balcony**
- Midships High Deck 8
- Forward High Deck 8
- Balcony (sheltered)**
- Midships Low Decks 4,5,6
- Midships Low Decks 4,5,6
- Aft Low Decks 4,5,6
- Forward Low Decks 4,5,6
- Balcony (obstructed view)\***
- Midships High Deck 8
- Midships High Deck 8
- Forward High Deck 8
- Oceanview**
- Forward/Aft Low Decks 4,5,6
- Atrium View Inside**
- Midships Low Decks 5,6
- Standard Inside**
- Midships Low Deck 4
- Aft Low Deck 4
- Forward Low Deck 4
- Midships Low Decks 5,6
- Midships Low Decks 4,5,6
- Forward High Deck 9
- Aft Low Decks 4,5,6
- Forward Low Decks 4,5,6
- Single Oceanview**
- Midships Low Deck 2
- Midships Low Deck 3

- Q1
- Q2
- Q4
- Q5
- Q6
- Q7
- BC
- BF
- BU
- BV
- BY
- BZ
- DB
- DC
- DF
- EF
- HB
- IC
- IE
- IF
- IB
- IC
- IE
- IF
- KB
- KC

Key to symbols

- L Lift
- Connecting staterooms
- + 3rd berth is a single sofa bed
- 3rd & 4th berth is a double sofa bed
- 3rd & 4th berths are two upper beds
- \* Staterooms have views obstructed by lifeboats
- ▲ Wheelchair accessible (stateroom sizes vary)
- ◇ Single level Q2 Suite
- ◆ Royal Suites do not have a balcony







# Queen Elizabeth stateroom layouts and categories.

## Queens Grill Grand & Master Suites.



**Grand Suite**  
**Q1**  
 2 beds, bath and shower, living/dining areas, balcony (from 1,375 sq. ft. or 127 sq.m.)

**Master Suite**  
**Q2**  
 2 beds, bath and shower, living/dining areas, balcony (approx 1,100 sq.ft. or 102 sq.m.)



Grand Suite

## Queens Grill Penthouses & Suites.



**Penthouse**  
**Q3, Q4**  
 2 beds, bath and shower, living area, balcony (from 508 sq.ft. or 47 sq.m.)

**Queens Suite**  
**Q5, Q6**  
 2 beds, bath and shower, living area, balcony (from 484 sq.ft. or 45 sq.m.)



Penthouse



Queens Suite

## Princess Grill Suites.



**Princess Suite**  
**P1, P2**  
 2 beds, bath with shower, living area, balcony (from 335 sq.ft. or 31 sq.m.)



Princess Suite

## Britannia Staterooms.



**Club Balcony**  
**A1, A2**  
 2 beds, shower, living area, balcony (from 258 sq.ft. or 24 sq.m.)

**Balcony**  
**BA, BB, BC, BD, BE, BF**

**Balcony (Partially Obstructed View)**  
**CA, CB**  
 2 beds, shower, living area, balcony (from 228 sq.ft. or 21 sq.m.)

**Oceanview**  
**EB, EC, EF**

**Oceanview (Obstructed View)**  
**FB, FC**

2 beds, shower, living area (from 180 sq.ft. or 16 sq.m.)



Oceanview



Single Oceanview

**Single Oceanview**  
**KC**  
 1 bed, shower (from 133 sq.ft. or 12 sq.m.)

**Single Inside**  
**LC**  
 1 bed, shower (from 159 sq.ft. or 14 sq.m.)



Club Balcony



Oceanview



Single Oceanview



Deluxe Inside

**Deluxe Inside**  
**GA, GB, GC**  
 2 beds, shower (from 200 sq.ft. or 18 sq.m.)

**Standard Inside**  
**IA, ID, IE, IF**  
 2 beds, shower (from 152 sq.ft. or 14 sq.m.)



Deluxe Inside

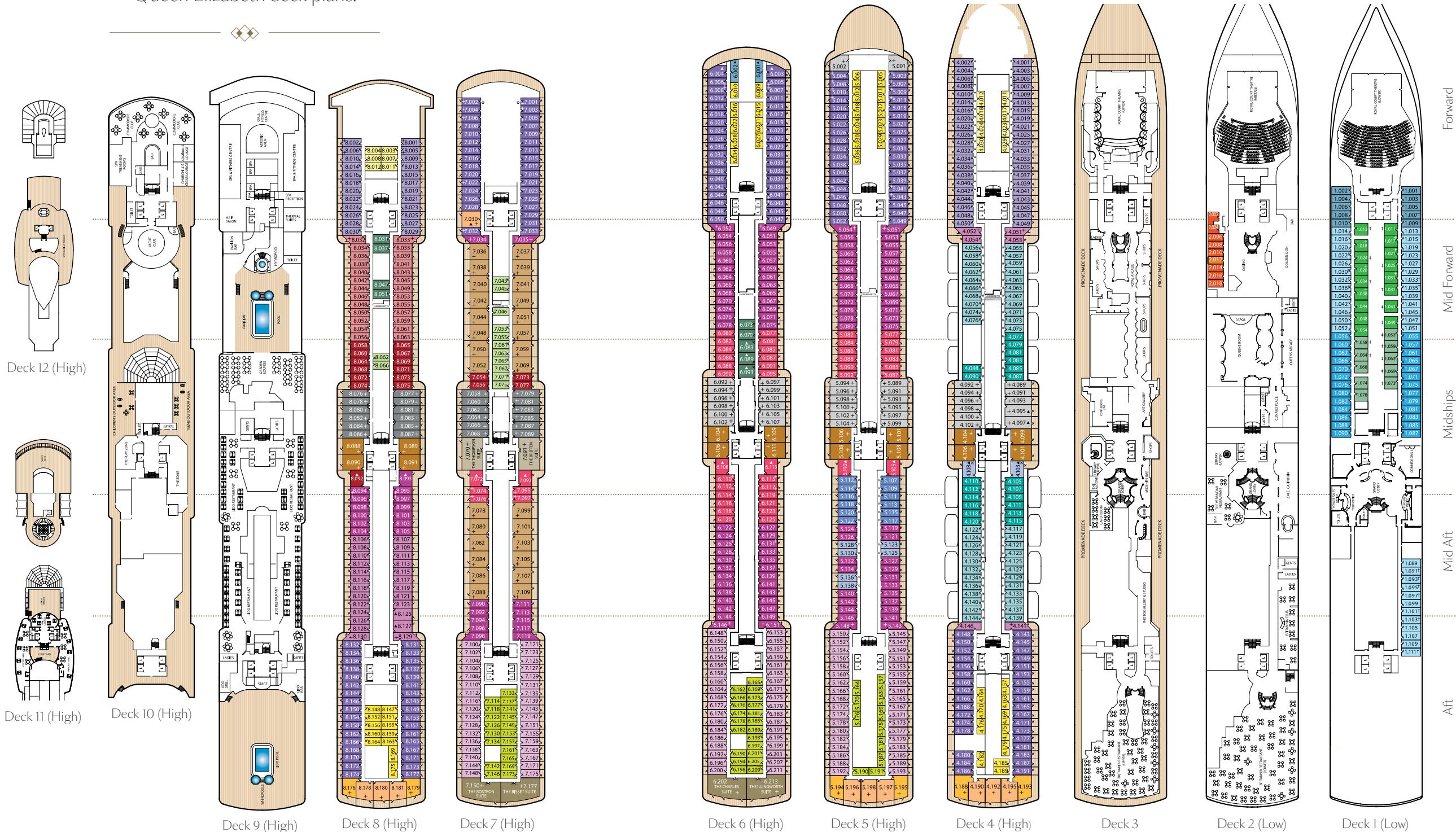
The diagrams and pictures of staterooms within this brochure are examples only, and individual staterooms may vary.



Queen Elizabeth deck plans.

Stateroom Category

- Grand Suites**
- Aft High Decks 6,7 ■ Q1
- Master Suites**
- Midships High Deck 7 ■ Q2
- Penthouse**
- Midships High Decks 4,5,6,8 ■ Q3
- Midships/Aft High Deck 7 ■ Q4
- Queens Suites**
- Aft High Decks 4,5,8 ■ Q5
- Forward/Aft High Decks 4,5,7,8 ■ Q6
- Princess Suites**
- Midships High Decks 7,8 ■ P1
- Midships/Forward High Decks 4,5,6 ■ P2
- Club Balcony**
- Midships High Deck 7,8 ■ A1
- Midships High Deck 8 ■ A2
- Balcony**
- Midships High Decks 5,6,7 ■ BA
- Midships High Decks 5,6,7,8 ■ BB
- Midships High Decks 4,8 ■ BC
- Aft High Decks 5,6,7 ■ BD
- Forward/Aft High Decks 4,5,6,7,8 ■ BE
- Forward High Decks 4,8 ■ BF
- Balcony (partially obstructed view)\***
- Midships High Deck 5 ■ CA
- Midships High Decks 4,5 ■ CB
- Oceanview**
- Midships Low Deck 1 ■ EB
- Midships/Aft Low Deck 1 ■ EC
- Forward High Deck 6\* ■ EF
- Low Deck 1 ■ EF
- Oceanview (obstructed view)\***
- Midships High Deck 4 ■ FB
- Midships High Deck 4 ■ FC
- Deluxe Inside**
- Midships High Decks 6,8 ■ GA
- Midships Low Deck 1 ■ GB
- Midships Low Deck 1 ■ GC
- Standard Inside**
- Midships High Decks 7,8 ■ IA
- Aft High Decks 5,6,7 ■ ID
- Forward/Aft High Decks 4,5,6,8 ■ IE
- Forward High Decks 4,8 ■ IF
- Single**
- Oceanview Midships, Low Deck 2 ■ KC
- Inside Midships, Low Deck 2 ■ LC

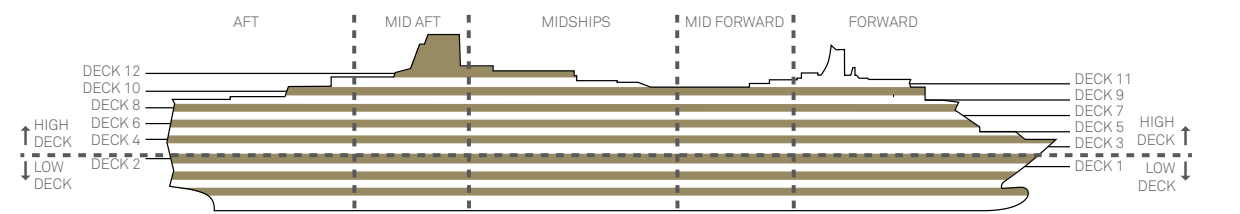


- Key to symbols**
- L Lift
  - † Indicates 2 lower berths and 1 upper berth
  - + Indicates 3rd berth is a single sofa bed
  - # Indicates 3rd and 4th berth are a single sofa bed and one upper bed
  - ¥ Indicates 3rd and 4th berths are single sofa beds
  - \* Staterooms have views obstructed by lifeboats
  - X Views partially obstructed by lifeboat mechanism
  - ▲ Wheelchair accessible
  - o Staterooms 7.001 & 7.002 shaded by Bridge Wings
  - ◆ Staterooms 6.003 & 6.004 have forward facing ocean views
  - Staterooms 4.001-4.042, Deck 4 Forward, have metal fronted balconies

**Ship facts**

Entered Service:	2010
Refit:	November 2018
Country of Registry:	Bermuda
Service Speed:	21.7 knots
Max Speed:	23.7 knots
Guest Capacity:	2,081
No. of Crew:	1,005
Length Overall:	964.5 feet (294 metres)
Width:	106 feet (32 metres)
Draft:	25.9 feet (8 metres)

View Queen Elizabeth stateroom accommodation and virtual tours online at [cunard.com/qe](http://cunard.com/qe)







# Queen Victoria stateroom layouts and categories.

## Queens Grill Penthouse Suites.



Q3, Penthouse Suite



Penthouse Suite

**Penthouse Suite**  
Q3, Q4~  
2 beds, bath and shower, living/dining areas, balcony (from 484 sq.ft. or 47 sq.m.)

## Queens Grill Suites.



Q5, Queens Suite



Queens Suite

**Queens Suite**  
Q5, Q6  
2 beds, bath and shower, living area, balcony (from 484 sq.ft. or 47 sq.m.)

## Princess Grill Suites.



Princess Suite



Princess Suite

**Princess Suite**  
P1, P2  
2 beds, bath with shower, living area, balcony (from 335 sq.ft. or 31 sq.m.)

## Britannia Staterooms.



BA-BE Balcony

**Club Balcony**  
A1, A2  
2 beds, shower, living area, balcony (from 254sq. ft. or 24 sq.m.)

**Balcony**  
BA, BB, BC, BD, BE, BF

**Balcony (Partially Obstructed View)**  
CA, CB  
2 beds, shower, living area, balcony (from 228 sq.ft. or 21 sq.m.)



Oceanview

**Oceanview**  
EB, EC, EF  
2 beds, shower, living area (from 197 sq.ft. or 18 sq.m.)

**Single Oceanview**  
KC  
1 bed, shower (from 133 sq.ft. or 12 sq.m.)

**Oceanview (Obstructed View)**  
FB, FC  
2 beds, shower, living area (from 180 sq.ft. or 16 sq.m.)



Deluxe Inside

**Deluxe Inside**  
GA, GB, GC  
2 beds, shower (from 200 sq.ft. or 18 sq.m.)

**Standard Inside**  
IA, ID, IE, IF  
2 beds, shower (from 152 sq.ft. or 14 sq.m.)

**Single Inside**  
LC  
1 bed, shower (from 159 sq.ft. or 14 sq.m.)



Club Balcony



Oceanview



Single Oceanview



Deluxe Inside

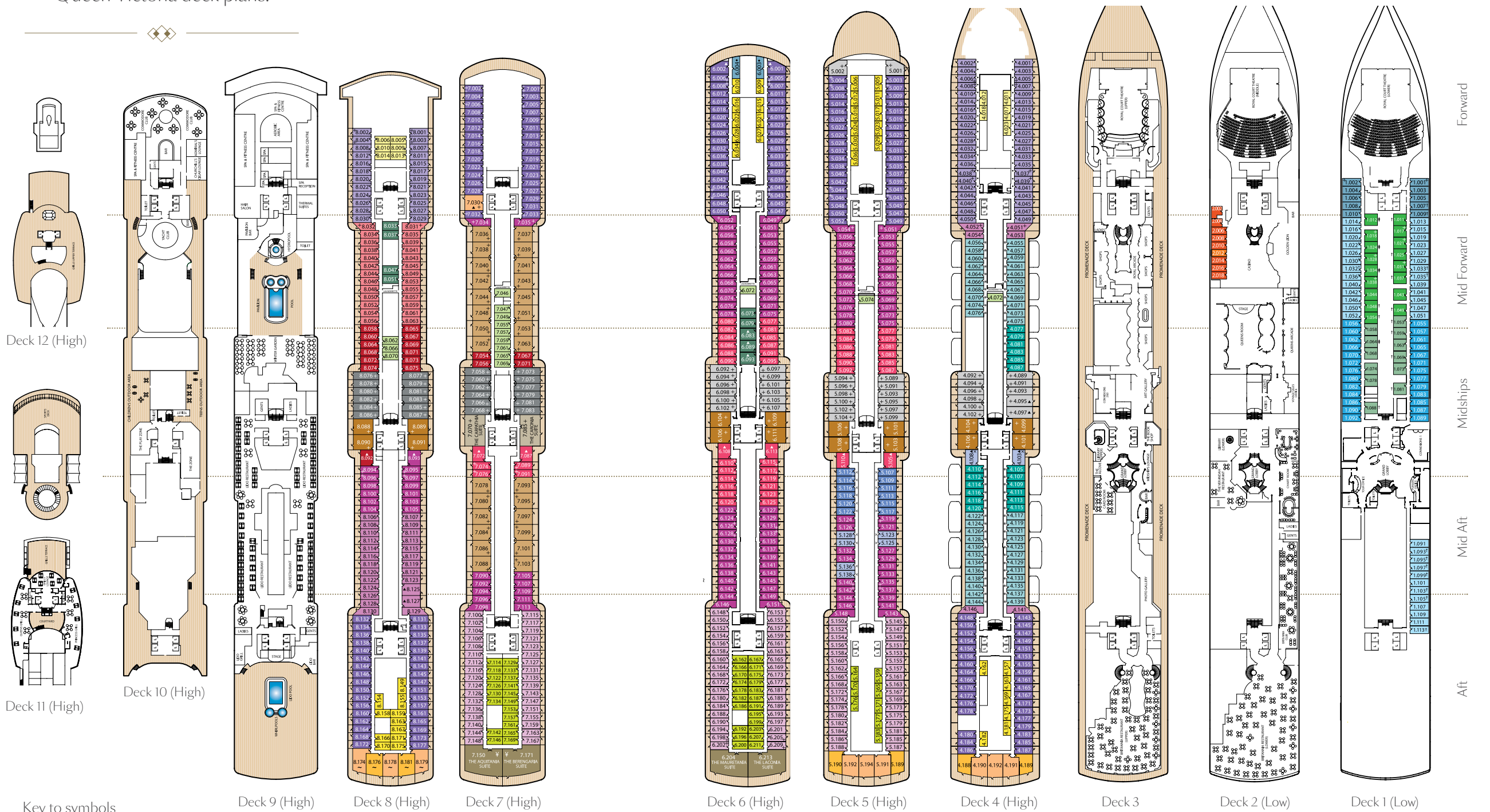
~ Layout is indicative of all Q3 suites and only Q4 suites located on deck 7. Q4 suites located on deck 8 vary in layout, configuration and interior furnishings. The diagrams and pictures of staterooms within this brochure are examples only, and individual staterooms may vary.



Queen Victoria deck plans.

Stateroom Category

- Grand Suites**
- Aft High Decks 6,7 ■ Q1
- Master Suites**
- Midships High Deck 7 ■ Q2
- Penthouse**
- Midships High Decks 4,5,6,8 ■ Q3
- Midships/Aft High Decks 7,8~ ■ Q4
- Queens Suites**
- Aft High Decks 4,5 ■ Q5
- Forward/Aft High Decks 4,5,7 ■ Q6
- Princess Suites**
- Midships High Decks 7,8 ■ P1
- Midships/Forward High Decks 4,5,6 ■ P2
- Club Balcony**
- Midships High Decks 7,8 ■ A1
- Midships High Deck 8 ■ A2
- Balcony**
- Midships High Decks 5,6,7 ■ BA
- Midships High Decks 5,6,7,8 ■ BB
- Midships High Decks 4,8 ■ BC
- Aft High Decks 5,6,7 ■ BD
- Forward/Aft High Decks 4,5,6,7,8 ■ BE
- Forward High Decks 4,8 ■ BF
- Balcony (partially obstructed view)\***
- Midships High Deck 5 ■ CA
- Midships High Decks 4,5 ■ CB
- Oceanview**
- Midships Low Deck 1 ■ EB
- Midships/Aft Low Deck 1 ■ EC
- Forward High Deck 6\* ■ EF
- Forward Low Deck 1 ■ EF
- Oceanview (obstructed view)\***
- Midships High Deck 4 ■ FB
- Midships High Deck 4 ■ FC
- Deluxe Inside**
- Midships High Decks 6,8 ■ GA
- Midships Low Deck 1 ■ GB
- Midships Low Deck 1 ■ GC
- Standard Inside**
- Midships High Decks 4,5,6,7,8 ■ IA
- Aft High Decks 5,6,7 ■ ID
- Forward/Aft High Decks 4,5,6,8 ■ IE
- Forward High Decks 4,8 ■ IF
- Single**
- Oceanview Midships, Low Deck 2 ■ KC
- Inside Midships, Low Deck 2 ■ LC



Key to symbols

- L Lift
- † Indicates 2 lower berths and 1 upper berth
- + Indicates 3rd berth is a single sofa bed
- ‡ Indicates 3rd and 4th berth are a single sofa bed and one upper bed
- ¥ Indicates 3rd and 4th berths are single sofa beds
- \* Staterooms have views obstructed by lifeboats
- × Views partially obstructed by lifeboat mechanism
- ▲ Wheelchair accessible
- Staterooms 7.001 & 7.002 shaded by Bridge Wings
- ◆ Staterooms 6.003 & 6.004 have forward facing ocean views
- Staterooms 4.001-4.042, Deck 4 Forward, have metal fronted balconies
- ~ Layout, configuration and furnishings vary to Q4 suites on Deck 7.

Ship facts

Entered Service:	2007
Refit:	May 2017
Country of Registry:	Bermuda
Speed:	23.7 knots
Guest Capacity:	2,061
No. of Crew:	981
Length Overall:	964.5 feet (294 metres)
Width:	106 feet (32.3 metres)
Draft:	25.9 feet (8 metres)

View Queen Victoria stateroom accommodation and virtual tours online at [cunard.com/qv](http://cunard.com/qv)





# The Fine Line

There's a fine line between a night to remember and a night you'll never forget.  
There's a fine line between cruising and Cunard.  
*Cross it with us at [Cunard.com](http://Cunard.com)*



**CUNARD**



